



Protect what you value.

McAfee Network Security Manager

Simple, centralized control for distributed McAfee Intrusion Prevention System sensors

This powerful, hardened, plug-and-play appliance offers easy management of McAfee® Network Security Platform (formerly McAfee IntruShield®) sensors. Real-time control and real-time data give you fast time-to-resolution and fast time-to-confidence, even with the largest global networks.

KEY ADVANTAGES

Consistent control

- Control configurations and policies for multiple IPS sensors from a single system

Ready to run

- Hardened appliance arrives pre-installed and pre-configured with time-tested policies

Fast, accurate decisions

- Improve time-to-confidence with real-time insight from all your NSP sensors

Operational efficiency

- Integrate and automate management processes to save time and effort

Reliable Management for Mission-Critical Network Security

Sophisticated network threats and resulting service disruptions hurt productivity. They can permanently damage precious brand and business assets. The right proactive protection means systems of strong, powerful intrusion prevention sensors. As you deploy these distributed devices, you need to maintain efficiency, visibility, response time, and policy compliance.

Rely on McAfee Network Security Manager (NSM). Unrivaled simplicity teams up with centralized, real-time security management. It comes pre-installed and pre-configured for the control you need to deploy McAfee Network Security Platform (NSP) appliances everywhere.

Real-Time Control of Real-Time Data

A single NSM appliance delivers centralized, web-based management and unrivaled ease-of-use. The state-of-the-art console and enhanced graphical user interface put you in control of real-time data. You can easily manage, configure, and monitor all NSP appliances. The intuitive web-based management interface can handle any situation, from single devices up to widely distributed, mission-critical deployments.



Network Security Manager appliance

Faster Time-to-Resolution and Time-to-Confidence

Pre-installed for plug-and-play operation, this hardened appliance ensures scalable, real-time, always-on control. It delivers comprehensive and in-depth attack information to guide resolution. You can even simulate in-line blocking to determine the potential impact when NSP recommends blocking an attack.

NSM adapts to your needs. Customize dashboards to display the alerts and queries that matter to you. If you are also running McAfee Host Intrusion Prevention, you can aggregate both host and network intrusion prevention system alerts within the McAfee Alert Manager. Secure access to the NSM empowers remote management of many sensors deployed throughout the network.

Ease Compliance

NSM features simple, granular security policy management. Easy-to-use, preconfigured policies get you protecting quickly with preset blocking. Define and edit custom signatures and use the virtual IPS to set individual policies for different network segments and hosts. Global policy editing simplifies consistent policy setting across devices.

“Management and control capabilities are outstanding, and provide extremely powerful and flexible means of controlling anything from a single device to a large, enterprise-wide deployment.”

—Bob Walder, president,
The NSS Group

NSS IPS Group Test,
Edition 3

For audits and management reviews, define custom graphical reports that can be scheduled and distributed automatically.

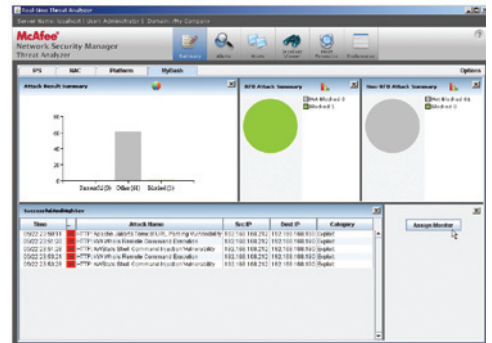
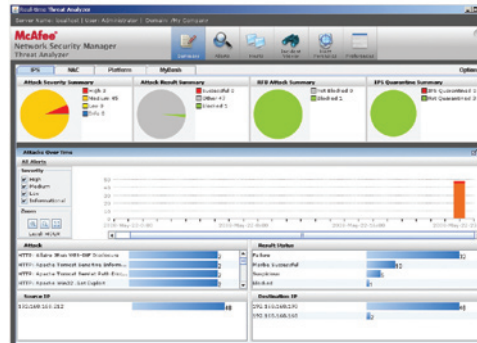
Integration with McAfee ePolicy Orchestrator® (ePO™) helps you unify risk management and policy compliance and respond quickly to threats. Through ePO, NSM can directly retrieve system information such as status and configuration to assist with resolution.

McAfee Network Security Manager—Global Edition

McAfee Network Security Manager—Global Edition is tuned for managing NSP sensor deployments in very large and distributed enterprise and service provider networks. It is appropriate for global deployments of up to 100 NSP appliances.

McAfee Network Security Manager

The McAfee Network Security Manager is an advanced solution for NSP sensor deployments in small and medium-sized networks and enterprise branch offices, and is suitable for deployments of up to six NSP sensors.



Powerful, easy-to-use management with customizable dashboards

	Network Security Manager	Network Security Manager—Global Edition
Platform support	Windows 2003	Windows 2003
Number of NSP appliances supported	Up to six	Up to 100
Technical specifications		
Form factor	1U	1U
CPU	Quad Core Xeon, 2.0 Ghz	Quad Core Xeon, 2.0 Ghz
RAM	4 GB	4 GB
RAID controller	Yes	Yes
Disk space	300 GB SAS	300 GB SAS
Power	Single AC	Single AC
Dimensions	30" x 19" x 1.69"	30" x 19" x 1.69"
Client requirements	Internet Explorer v6.0	Internet Explorer v6.0

Platform supports an optional redundant AC power supply, orderable separately.

McAfee, Inc. 3965 Freedom Circle, Santa Clara, CA 95054, 888.847.8766, www.mcafee.com

McAfee, IntruShield, ePolicy Orchestrator, ePO, and/or other noted McAfee related products contained herein are registered trademarks or trademarks of McAfee, Inc., and/or its affiliates in the US and/or other countries. McAfee Red in connection with security is distinctive of McAfee brand products. Any other non-McAfee related products, registered and/or unregistered trademarks contained herein is only by reference and are the sole property of their respective owners. © 2008 McAfee, Inc. All rights reserved. 1-na-cor-ns-mngr-001-0608

