



Protect what you value.

# McAfee Port Control

(Formerly SafeBoot® Port Control™)

## Govern the use of removable devices connected to PCs

One of the most important issues facing today's organizations is the protection of data assets. McAfee Port Control provides a scalable, enterprise-wide security solution that uses strong access control to prevent unauthorized use of removable devices connected to serial, parallel, USB, Bluetooth, FireWire, IrDA, and other ports.

### KEY ADVANTAGES

#### Strong access control for desktops, laptops, and tablets

- Prevent unauthorized access and use of removable devices
- Identify and control all port device classes and types for serial, parallel, USB, Bluetooth, FireWire, IrDA, and other ports
- Maximize user productivity with a solution that works transparently

#### Centralized management that lowers TCO

- Gain powerful, centralized, cost-effective control over enterprise security
- Centrally control and manage access to port devices
- Support compliance with regulatory data-security mandates

#### Integrated, end-to-end data and device security

- Integrate Port Control with other McAfee solutions to provide end-to-end data and device security and single sign-on capability

### Unsurpassed access control for removable devices

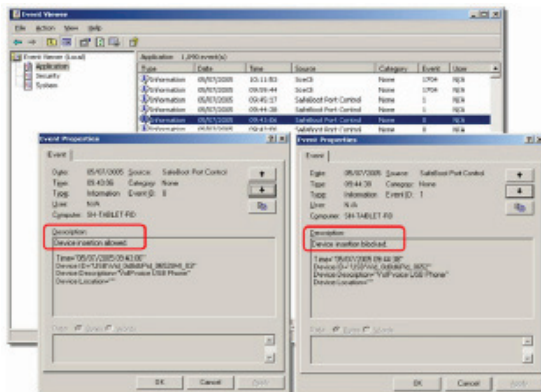
In today's organizations, mission-critical data travels freely across networked environments and the Internet. This data is subsequently stored and accessed on desktops, laptops, tablets, handheld devices, removable storage drives, removable disks, and more. It is no wonder that more than 75 percent of Fortune 1000 companies have fallen victim to accidental or malicious data loss. Such data breaches are costing companies an average of \$6.3 million per incident and \$4.1 million in lost business.<sup>1</sup>

McAfee Port Control for desktops, laptops, and tablet PCs provides strong access control, centralized management capabilities, extensive mandatory security policies, and policy synchronization with directories such as Active Directory and LDAP. This ensures that only authorized personnel may connect only approved devices to PC ports, including memory sticks, removable disks, and more. The solution further extends McAfee's data and device security solution across the enterprise.

### Precise control over any removable media or device

With Port Control, you have full control over all devices, regardless of how they are attached, from enabling and disabling of the entire device, through device-class control, right down to individual device exceptions.

- Removable media devices such as CD-ROMs and memory sticks can be completely blocked, made read-only, or encrypted for read and/or write
- Items such as video codecs can be controlled. For example, allowing DVDs to be used for data exchange but not for playing movies
- All devices can be assigned permitted usage hours
- Attempts to use blocked devices are audited
- Installation and operation are completely silent



<sup>1</sup> Ponemon Institute: 2007 Annual Study: Cost of a Data Breach

## SYSTEM REQUIREMENTS

### Centralized management

#### Operating system

- Microsoft Windows XP SP2
- Microsoft Windows 2000 SP4
- Microsoft Windows Server 2003
- Microsoft Windows 2000 Server
- Microsoft Windows NT4.0 SP6A
- Also supports Microsoft Windows 95, 98, ME in Application mode only - NOT RECOMMENDED

*Windows 95 and 98 are limited to approximately 12 simultaneous connections. Windows NT, 2000, XP, 2003 Server are soft limited to 200 connections, but may be increased to up to 1000.*

#### Hardware Requirements

- CPU: Pentium compatible processor
- RAM: 128MB, 512MB recommended
- Disk Space 200MB
- For remote administration a TCP/IP network connection with a static DNS name / IP address is required.
- For high-loaded systems, please contact your **SafeBoot** representative for information on setting up multiple-server implementations.

### Port Control Client:

#### Operating system

- Microsoft Windows 2000
- Microsoft Windows XP
- Microsoft Windows 2003 Server

#### Hardware Requirements

- CPU: Pentium compatible processor
- RAM: 256MB
- Disk space 5MB
- For remote administration, a TCP/IP network connection is required.

## Features

### Strong access control and device management

Protect data assets by preventing unauthorized use of removable devices and managing what devices can and cannot be attached to an organization's machines.

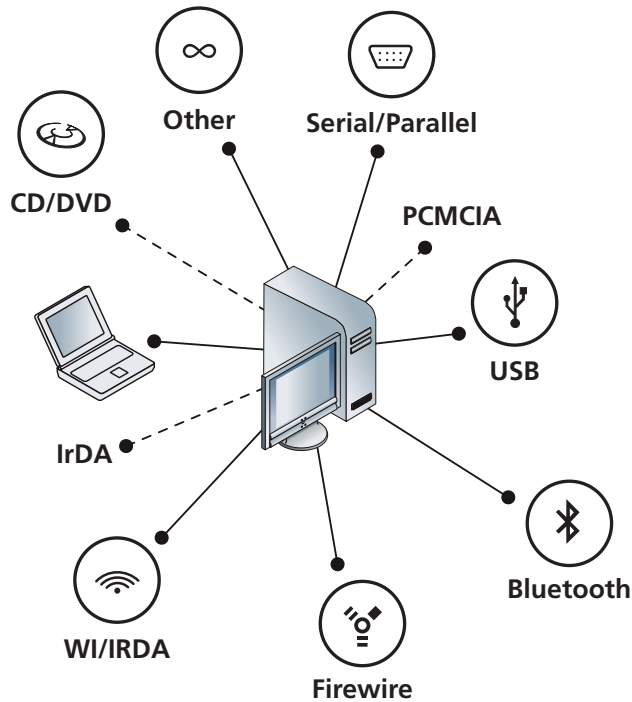
- Prevent unauthorized access to or use of removable devices such as CD-ROMs, PDAs, memory sticks, sound devices, codecs, smart card readers, and video cameras using strong access control
- Restrict the use of removable devices in accordance with security policies
- Gain precise control through use of standard policies and policies with exceptions; for example:
  - "No removable drives allowed" (standard policy)
  - "No removable drives allowed except Manufacturer A's USB memory stick" (policy with exception)

### Centralized management

- Gain central management capabilities, including central deployment, remote upgrades, policy management, a scripting tool, audit facilities, and policy synchronization
- Define and control which devices that users can access in accordance with mandatory, company-wide security policies
- Synchronize security policies with Microsoft Active Directory, Novell eDirectory, PKI, and others

### Integrated, end-to-end data and device security

- Seamlessly integrate Port Control with McAfee Endpoint Encryption (formerly *SafeBoot Encryption*) and other technologies to provide end-to-end data and device security
- Support a unified single sign-on solution through integration with McAfee Endpoint Encryption



McAfee Port Control

For more information about Data Protection, visit [www.mcafee.com/data\\_protection](http://www.mcafee.com/data_protection).

McAfee, Inc. 3965 Freedom Circle, Santa Clara, CA 95054, 888.847.8766, [www.mcafee.com](http://www.mcafee.com)

McAfee and/or other noted McAfee related products contained herein are registered trademarks or trademarks of McAfee, Inc., and/or its affiliates in the US and/or other countries. McAfee Red in connection with security is distinctive of McAfee brand products. Any other non-McAfee related products, registered and/or unregistered trademarks contained herein is only by reference and are the sole property of their respective owners. © 2008 McAfee, Inc. All rights reserved. 1-dp-pc-001-0108

