

# Mimosa NearPoint eDiscovery Option

## Powerful Search, Retrieval, and Management of Exchange Email, SharePoint Data and File System Documents for Litigation Hold, eDiscovery Response, Early Case Assessment, Litigation Support, and Internal Investigations

Every organization needs to be able to produce and preserve electronically stored information (ESI) for legal proceedings, regulatory investigations and internal investigations if called upon. Government inquiries, criminal and civil proceedings, and financial audits are just a few of the numerous circumstances that can force a costly and time-consuming search of ESI (electronically stored information), including Exchange email, SharePoint data, and office files.

In addition, organizations should rely on ESI as a source of valuable information when performing Early Case Assessments.

The Mimosa NearPoint™ eDiscovery Option is a robust yet easy-to-use Exchange email, SharePoint, and file system eDiscovery application that can be used from an internal auditor, corporate legal counsel, or external counsel's desktop. Using the eDiscovery Option, eDiscovery auditors define new discovery searches by selecting target Microsoft® Exchange mailboxes, SharePoint records, and/or file system servers and by defining search criteria, including owner, version, data range, content, file attributes, or a combination.

Full-text indexing of every archived object provides for the ability to search for responsive data across the three most requested ESI data types in discovery, Exchange, SharePoint, and file system data.

One eDiscovery tool to search across the most requested data types, place litigation holds, review data for responsiveness and export out as your response to a discovery request will save your legal and IT organizations time, productivity, and expense.

Exchange and SharePoint data present a uniquely risky data type when in discovery. The first responsibility of parties to a lawsuit is to protect *all* potentially responsive data that *could* be asked for by the opposing side. In Exchange email systems, this means being able to apply a litigation hold to not just a sent or received email, but also drafts, calendar entries, contacts, and task lists. For SharePoint systems, being able to place a record on litigation hold is a very

small part of the requirement. Other discoverable data types in SharePoint include Documents, Pictures, XML Documents, Slides, Wiki Pages, Dashboards, Events, Links, Contacts, Messages, Discussions, Workflow, Blogs, Blog comments, Reports and documents--something only Mimosa can do with NearPoint.

If you are looking at litigation support with your ESI archive, make sure you can manage all the data that you could be faced with managing, quickly.

### Key Product Highlights:

- Provides comprehensive discovery of all Exchange email, SharePoint and file system assets, saving time and money over traditional manual and first generation discovery solutions
- Provides for "Case Management" functionality so all aspects of a case can be organized and managed within specific Case profiles
- Protects email and file system assets during litigation with object-level litigation holds, reducing the risk of penalties, and fines for spoliation
- Provides a more comprehensive data set to search and place litigation holds on
- Enables reconstruction of complex events to understand user behavior for early case assessment and investigations
- Offers efficient collaboration capabilities so you can search, share, hold, review, and tag results for export among your workgroup

Archiving

Storage Management

Recovery



### CUSTOMER SPOTLIGHT

*"The demand to search email records for legal discovery is growing exponentially. NearPoint eDiscovery enables customers to manage their email discovery needs in-house and provides powerful search tools to discover and review thousands of email messages without the burden of searching backup tapes."*

— **Mark Diamond**  
President and CEO,  
Contoural, Inc.



## Comprehensive eDiscovery Across the Most Targeted ESI Data Types

The Mimosa NearPoint archival architecture combines the most “discovered” record types into a fully indexed and single-instanced archive, enabling a comprehensive discovery search from a single user interface.

Only the NearPoint archive captures all the discoverable contents of the Exchange server(s), a much more comprehensive set of SharePoint data along with all file system contents in one integrated archive.

With NearPoint and the eDiscovery Option, legal and IT teams can work together efficiently to determine early case assessment strategies, place responsive data on a litigation hold, and respond to discovery requests or complete an internal audit, quickly. Search queries can be saved and shared among users to ensure consistent and accurate results for frequently used search patterns and to show intent of response to the court.

Exchange Email, SharePoint data as well as file system data and office files can be found and placed on litigation hold to prevent them from being inadvertently deleted.

eDiscovery auditors can easily view a listing of all auditors with whom they have shared eDiscovery objects. Assigned eDiscovery reviewers can quickly browse through and review data in results sets, tag items with case descriptive tags, place objects on litigation hold, and share work with others. On completion of review, results sets can be exported in native file formats suitable for ingestion into other retention management applications, for external counsel review, or court ready production.

## Effective Case Organization and Management for Complex Litigation Tasks

Managing the eDiscovery of several cases or the many aspects of a single large case can be a complex and confusing. The eDiscovery option includes a “Case Management” capability to help you manage the myriad pieces of eDiscovery in a logical case profile. Now all aspects of a eDiscovery case, including searches, results sets, reviews and status, tags, litigation holds, and exports, can be combined into an easy to manage case object. (Figure 1)

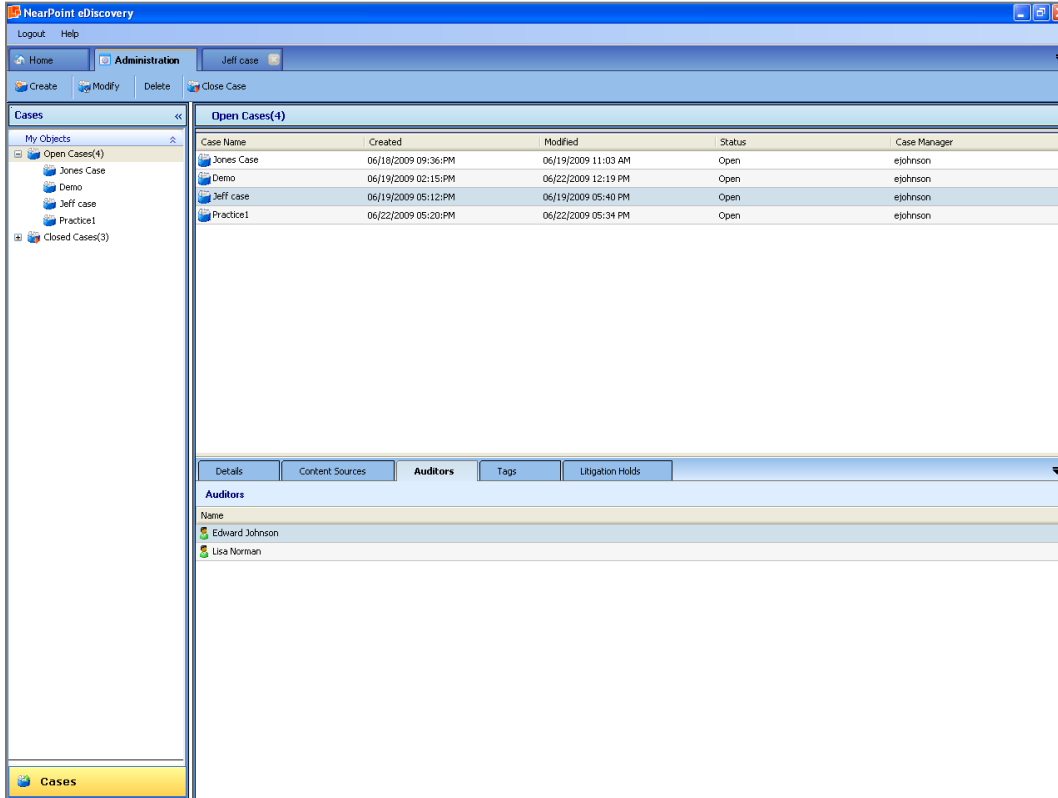


Figure 1. The eDiscovery Option Case Management Workspace

**MIMOSA NEARPOINT**

**SERVER REQUIREMENTS**

**NearPoint Platform Support**

- Microsoft Windows Server 2008 Standard and Enterprise Editions
- Microsoft Windows Server 2003 SP1, SP2—32 and 64-bit Standard and Enterprise Editions
- Microsoft Windows Server 2003 R2 SP1, SP2—32 and 64-bit Standard and Enterprise Editions

**Database Support**

- SQL Server 2008 Standard and Enterprise Editions
- SQL Server 2005 SP2 Standard and Enterprise Editions

**DESKTOP REQUIREMENTS**

- Microsoft® Windows XP SP2 or Vista SP1
- Microsoft Outlook 2003 SP1 or later
- Microsoft .NET Framework 3.5 SP1

**ABOUT MIMOSA SYSTEMS**

Mimosa Systems, Inc. delivers next-generation content archiving solutions for information immediacy, discovery, and continuity. Mimosa NearPoint is the industry's most comprehensive unstructured information management software solution for email, files, and instant messages, enabling archiving, eDiscovery, storage management, and recovery in a unified solution.

**MIMOSA SYSTEMS HEADQUARTERS**

3200 Coronado Drive  
 Santa Clara, CA 95054  
 T +1 (408) 970 9070  
 F +1 (408) 970 9041  
 Email: info@mimosasystems.com

**WORLDWIDE OFFICES**

Australia +61 (2) 9089 8603  
 Canada +1 (613) 797 2952  
 China +86 (21) 6103 7361  
 France +33 1 55 60 23 62  
 Germany +49 (89) 904 7551-0  
 India +91 (20) 4048596  
 United Kingdom +44 (0) 118 963 7860  
 www.mimosasystems.com



FEATURES	BENEFITS
Comprehensive discovery of Exchange, SharePoint and file data on file shares, laptops, and desktops	Perform searches, tag reviewed objects, and place litigation holds on the most requested ESI data types reducing time and cost of eDiscovery
Data exclusions	Designating data types to be excluded in the search enables more targeted results sets to be generated for review
Case Management	The eDiscovery option includes a "Case Management" capability to help you manage many eDiscovery processes or a single complex eDiscovery
Role-based administration	Delegate the ability to create cases, searches and place legal hold to key departments – Legal, Information Security, and HR
Workgroup collaboration	Discovery teams can efficiently work together using the eDiscovery workflow features to search, hold, review, and tag results for export
Object-level litigation holds	Legal teams can quickly create, manage, change, share, search, and remove litigation holds on data stored in the NearPoint archive
Multilevel search	Reduce your review workload by using the "Search In" feature to quickly narrow down search results by performing searches within searches to just the responsive data
Secure access	eDiscovery roles allow you to limit the data that eDiscovery auditors are allowed to access based on a specific set of mailboxes, file system servers, or Active Directory Groups
PST and ZIP export in flat format or folder hierarchy	Export email system discovery results in PST format and SharePoint and File System data in ZIP format with all associated metadata which meets FRCP requirements
Integration with Microsoft Active Directory	NearPoint takes advantage of Active Directory in managing archive litigation policies, applying access and litigation policies to custodians, and applying litigation holds based on department or other Active Directory relationships
Office file versioning	Assemble complete version histories of discovered ESI to show changes over time for litigation support

**Reduced Discovery Cost and Risk**

The Mimosa NearPoint eDiscovery Option lowers legal discovery total cost and reduces the overall risk associated with litigation. By eliminating the need to restore backups in order to search Exchange or file system data, the NearPoint eDiscovery Option reduces the burden on IT staff. The easy-to-use search tools

and collaboration features of eDiscovery will enhance the speed and efficiency of your legal and audit personnel. And most important, you can be assured that the ability of eDiscovery to produce the highest levels of ESI fidelity will provide your organization with the most accurate picture in any discovery situation.

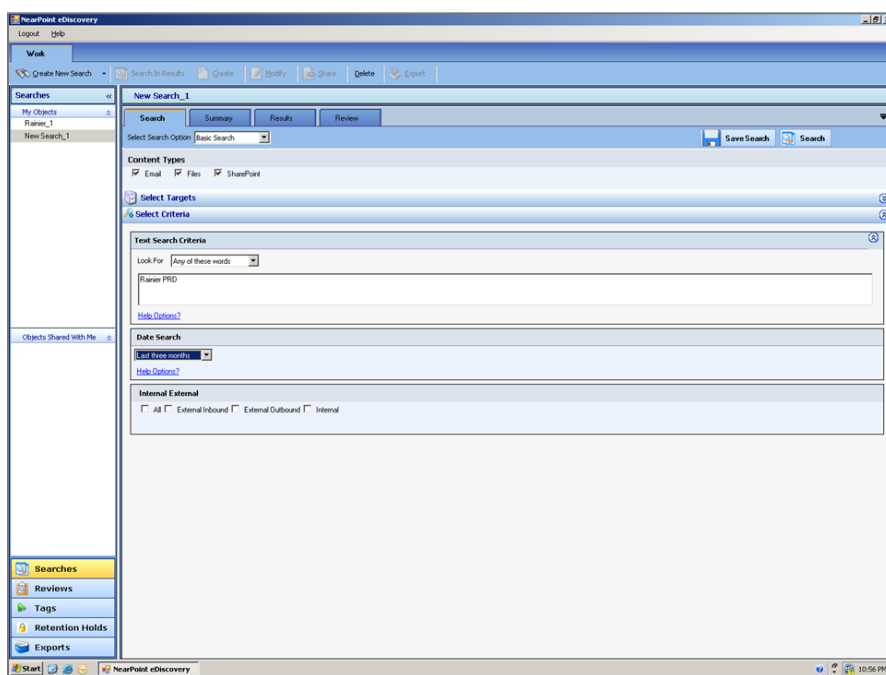


Figure 2. The eDiscovery Search Workspace