

# Mimosa NearPoint for SharePoint

## A Better Approach to SharePoint Recovery, Retention, and eDiscovery

The SharePoint® offering from Microsoft® encompasses two products—Windows® SharePoint Services™ (WSS) and Microsoft Office SharePoint Server (MOSS). Organizations deploy SharePoint in order to make information more accessible to end users and to enhance collaboration among work groups. Due to a relatively low cost, ease of use, tight integration to Microsoft Office applications like Outlook® and Word, and a wide range of features such as workflow, search, and access control, SharePoint has gained huge traction in the market. Recent Enterprise Strategy Group (ESG) research of over 1,000 worldwide organizations indicates nearly one out of two respondent companies has deployed or is planning to deploy MOSS. (Source: ESG Research Report, “*The Impact of Microsoft SharePoint on IT Infrastructure and Information Management*,” March 2009)

The benefits SharePoint delivers are undeniable—better and more efficient team collaboration, version control for documents edited by multiple team members, and faster access to information via search; SharePoint brings a new level of control to high-volume, user-generated content. However, the viral spread of SharePoint throughout organizations combined with its distributed deployment model does present some challenges to the efficient management of this important collaboration environment:

- Limited native backup and recovery—for organizations other than very small businesses, the existing SharePoint backup solution is of limited use due to its time for recovery (RTO), its inability to provide item-level recovery, and the significant hardware costs needed for recovery. The built-in SharePoint recovery tools require a separate recovery farm of servers and disks that can modify metadata such as date and time stamps and logs of who checked in the document when items are recovered. This is a time-consuming, multi-step process. Because the native SharePoint backup operation involves reading a large amount of data, running the backup process frequently can interfere with the performance of the system, including blocking end users’ access to their sites. The native SharePoint backup tool, Stsadm.exe, is used only to backup and restore top-level Windows SharePoint Services Web sites, and not for item-level recovery.
- Increasing storage costs—the distributed nature of SharePoint deployments allows content to grow

virtually unfettered. While it is possible to manage storage size by setting size quota on site collections, this limits end-user productivity and eliminates the ability to manage the information lifecycle effectively based on size and age. It is also exactly what organizations tried—and failed—to do in the email world. Organizations using MOSS can employ Information Management Policies, which can allow for the expiration of content, but these are time consuming to implement in environments with many web applications and/or multiple SharePoint farms. In addition, Version Document Libraries store full copies of document versions, resulting in significant additional storage costs.

- Limited retention management—it is challenging to implement effective retention and disposition policies that reduce eDiscovery and compliance risks because of the lack of central control over distributed deployments and the difficulty implementing Information Management policies in organizations with multiple SharePoint farms.
- Limited eDiscovery—SharePoint does not offer an interface or workflow for legal teams to conduct unified searches across deployments; to place a legal hold without making another copy; or to review, tag, and log exports of potentially responsive content.

## Mimosa NearPoint™ for SharePoint Archiving

Mimosa NearPoint provides a holistic solution to managing SharePoint data with integrated archiving,

Archiving/Storage Management

eDiscovery

Recovery

## CUSTOMER SPOTLIGHT

*“NearPoint’s ability to improve application performance, lower storage costs, and centralize information for easy access via its archiving capabilities can enhance any MOSS implementation. When customers then realize that they can significantly mitigate the risk of data loss and reduce the time it takes to recover data with the same NearPoint platform, they will realize that Mimosa addresses many of MOSS’s current operational challenges.”*

—**Brian Babineau**,  
Senior Analyst,  
Enterprise Strategy Group



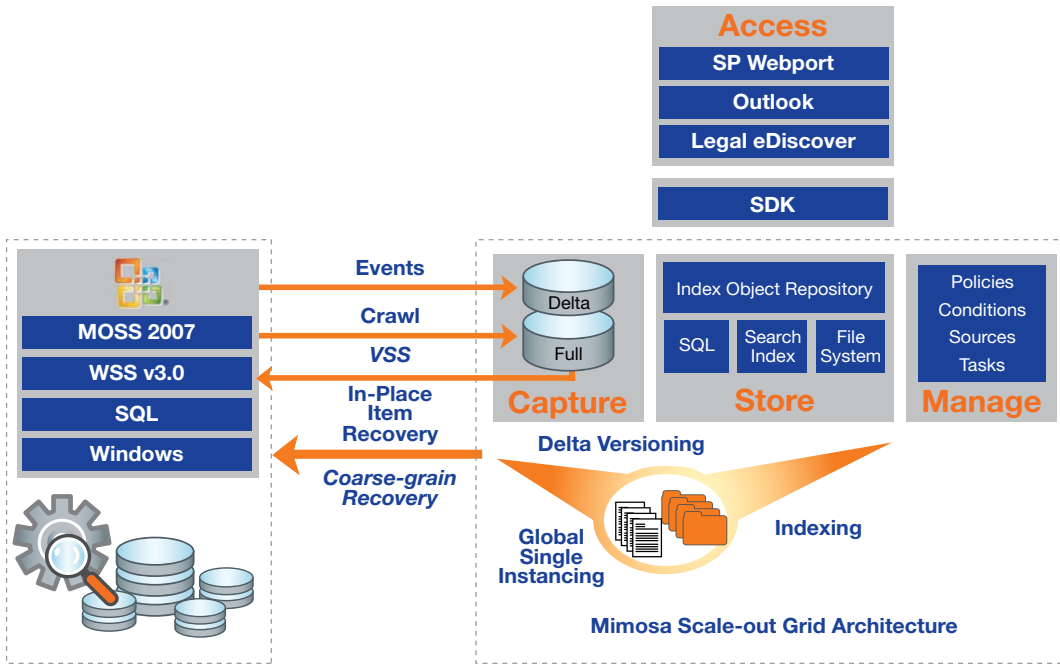


Figure 1. NearPoint for SharePoint Architecture

recovery, and eDiscovery. NearPoint is the only SharePoint management product to combine both archiving and recovery while maintaining easy end-user access to information. In addition, Mimosa NearPoint offers the most comprehensive SharePoint data capture available. Customers can capture all content types and associated metadata and attachments, perform continuous capture via Change Notification, and preserve the relationships between sites and content. NearPoint also provides full-text indexing and global single-instancing on all archived content. This content can then be offloaded from SharePoint to enable storage cost savings while maintaining seamless end-user access via stubbing. Moreover, Mimosa NearPoint also manages the retention and disposition of SharePoint content across the archive in accordance with organizational policies.

With comprehensive capture and archiving capabilities also comes the ability to provide robust SharePoint recovery functionality. Mimosa NearPoint allows both fine-grained and coarse-grained recovery (Figure 2). For fine-grained recovery, NearPoint allows administrators to browse and search the SharePoint hierarchy via the NearPoint admin console to select a recovery scope (e.g. specific item) and destination. Content can then be restored to the original or to a new destination while NearPoint automatically resolves discrepancies and respects permissions. With coarse-grained recovery, NearPoint recovers full SharePoint environments. This provides recovery for

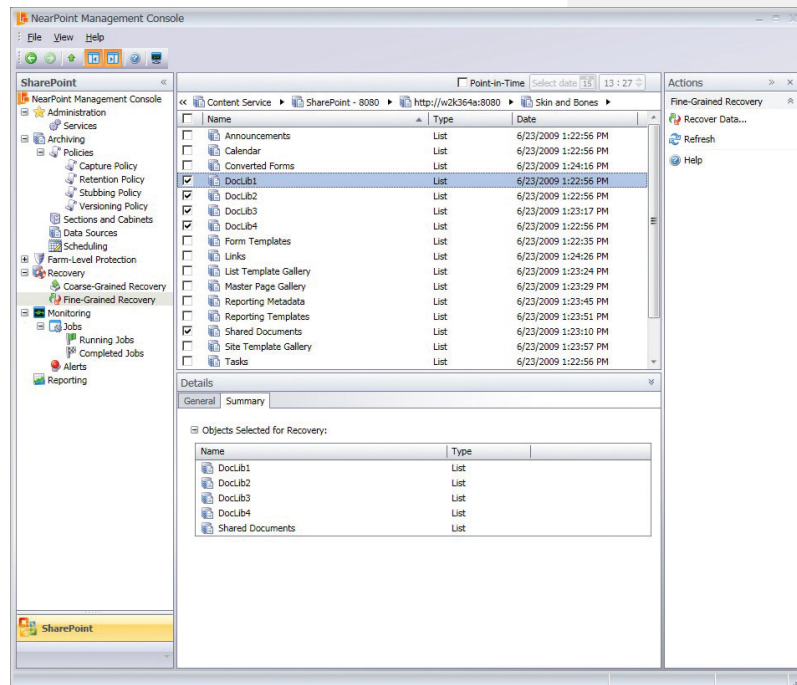


Figure 2. Mimosa NearPoint's Fine-Grained Recovery

SharePoint components such as the front-end web server, content databases, shared service provider (SSP) databases, the configuration and central admin databases, and the search database and search index files. Customers who use NearPoint to manage SharePoint repositories benefit in multiple ways.

- Fast, in-place, and cost-effective recovery—NearPoint combines archiving and recovery into one product so that the same copy of content is leveraged for both end-user access and recovery.



This eliminates the need for expensive scratch areas to enable recovery and allows administrators to recover individual items in a matter of minutes without having to restore full SharePoint environments.

- Full-fidelity recovery—because NearPoint captures and preserves both content and context, organizations get the benefit of recovery with zero data loss. For example, workflows are often improperly recovered by competitive solutions—the result is restoring content to a state that is not useful for the organization, or altogether non-functional. With NearPoint, content is recovered with all associated metadata and dependencies. The content is immediately useful within its process context.
- Flexible, dynamic retention management—organizations can apply retention policies to content based on multiple rules and can select only the content types, e.g. documents or sites, that those policies are executed on. Because the archive manages content from distributed SharePoint farms, customers can have centralized retention policy management in NearPoint. Retention policies are dynamic and can be changed as needed. In addition, NearPoint provides item-level legal hold, reducing the risk of adverse inference in the event of eDiscovery.
- Low-cost eDiscovery—customers reduce the cost of collection by proactively managing SharePoint content in one unified archive. NearPoint lowers the cost of review by allowing organizations to cull-down the amount of responsive data with powerful search capabilities. Organizations gain efficiencies in review and early case assessment with NearPoint’s case management and eDiscovery workflow.
- Reduced storage cost—organizations consolidate the content from multiple NearPoint farms into one archive that provides single-instance storage and advanced versioning. This also helps to increase the operational efficiency of production SharePoint environments by offloading content to NearPoint while providing seamless access to information via stubs that are transparent to both users and to SharePoint search (Figures 3 and 4).

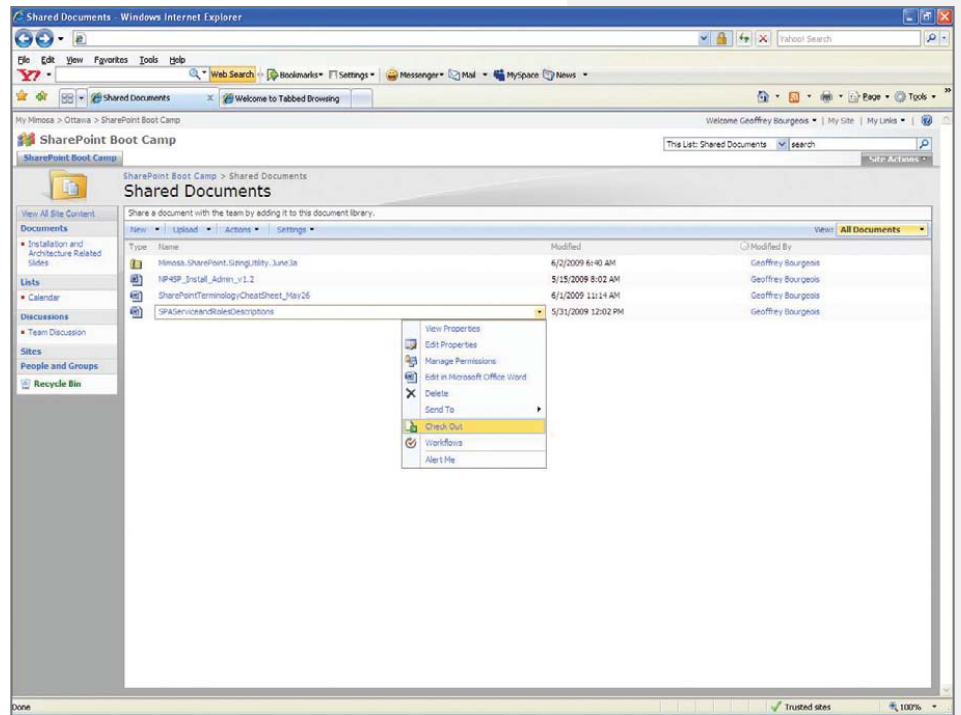


Figure 3. Seamless End-User Access (Browse)

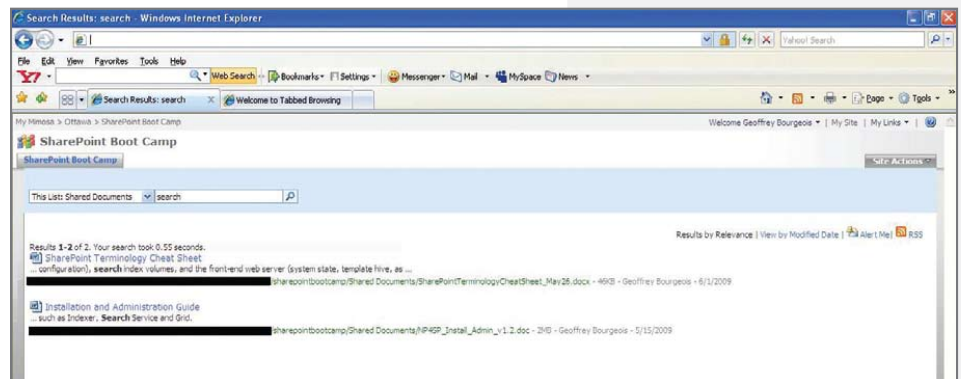


Figure 4. Seamless End-User Access (Search)

### Mimosa NearPoint for SharePoint Differentiators

Mimosa Systems offers a SharePoint Archiving and Recovery solution that has the tightest integration with WSS and MOSS of any product on the market. With Mimosa NearPoint for SharePoint, customers get all the benefits SharePoint has to offer, while gaining more control over the growth and management of SharePoint content and storage, better risk management with centralized retention policies and legal hold, and the ability to sleep well at night knowing recovery at any level of granularity is immediate. Mimosa NearPoint for SharePoint offers:

- Comprehensive capture of SharePoint Content
  - Continuous capture on any content types
  - Preservation of relationships between sites and content



- Integrated Archive and Data Protection
  - In place item-level recovery
  - Coarse-grain recovery
  - Full-fidelity recovery, e.g. workflow associations
  - Full recovery of database and file systems data
- Easy end-user access to information
  - Seamless, transparent access via stubbing
- Delta storage of document versions
- SIS across all content-types—documents, images, sites
- Advanced eDiscovery workflow and item-level legal hold

FEATURES	BENEFITS
Comprehensive capture of SharePoint content including: <ul style="list-style-type: none"> <li>• Capture of all content types including documents, lists, calendars, and workflows</li> <li>• Preserves relationships between sites and content</li> <li>• Continuous capture</li> </ul>	<ul style="list-style-type: none"> <li>• Reduces risk by ensuring all SharePoint content, if required, across multiple SharePoint farms and multiple geographic regions, can be immediately available and recoverable from a single NearPoint deployment</li> <li>• Increases IT efficiency by eliminating the requirement to backup SharePoint sites individually with packaged SharePoint tools such as SMIGRATE</li> </ul>
Full Fidelity SharePoint recovery and data protection including both: <ul style="list-style-type: none"> <li>• Fine-grained recovery</li> <li>• Coarse-grained recovery</li> </ul>	<ul style="list-style-type: none"> <li>• Eliminates the use of SharePoint recovery farms for item-level recovery</li> <li>• Maintains consistency by preserving original metadata when recovering SharePoint content</li> <li>• Provides flexibility by enabling recovery options ranging from full SharePoint environments to item-level</li> <li>• Improves recovery point objectives with continuous capture</li> </ul>
Single-instance storage across all SharePoint content types, such as documents, images, as well as across all other archived content (e.g., email, attachments, file system content)	<ul style="list-style-type: none"> <li>• Decreases storage costs in two ways:               <ul style="list-style-type: none"> <li>– by de-duplicating content archived across all SharePoint sites and farms</li> <li>– by providing centralized storage consolidation to a system otherwise deployed and managed in a distributed fashion</li> </ul> </li> </ul>
Document versioning	<ul style="list-style-type: none"> <li>• Lowers storage costs even further by only storing delta changes to documents instead of full versions that SharePoint Versioned Document Libraries natively stores and manages</li> </ul>
Seamless end-user access via policy-based, transparent stubbing of SharePoint content	<ul style="list-style-type: none"> <li>• Ensures user adoption via zero impact to the end-user experience—continued, direct access to the SharePoint user interface</li> <li>• No training required to learn how to access content</li> <li>• Access to archived content via native SharePoint search interface (search NearPoint from SharePoint search)</li> </ul>
Centralized retention management for SharePoint content	<ul style="list-style-type: none"> <li>• Reduces risk for eDiscovery and compliance by applying consistent retention and disposition policies across distributed SharePoint deployments</li> </ul>
Advanced eDiscovery workflow with search and review	<ul style="list-style-type: none"> <li>• Saves time and lowers costs by conducting eDiscovery searches across all SharePoint content, and optionally alongside email, file system, and other archived content</li> <li>• Increases eDiscovery efficiency by providing eDiscovery workflow including search, review lists, tagging, case management, and export of data</li> <li>• Eases review process by giving preview-pane access to otherwise hard-to-review SharePoint list items such as blogs, calendars, tasks, and wikis</li> </ul>
Simple item-level legal hold	<ul style="list-style-type: none"> <li>• Ensure eDiscovery readiness by enabling in-place, item-level legal hold on SharePoint content without creating copies of content or having to manage multiple across multiple sites</li> </ul>
Easy-to-use archive policy wizard that walks administrators through the creation of policies and archiving rules	<ul style="list-style-type: none"> <li>• Improves implementation time, and administrative efficiency with easy-to-use archive policy templates</li> </ul>
Easy to deploy as add-on module to the NearPoint platform	<ul style="list-style-type: none"> <li>• Achieve fast time to value and even greater storage cost reduction by deploying SharePoint archiving and management alongside Mimosa NearPoint for Exchange email archiving and file system archiving</li> </ul>

**MIMOSA NEARPOINT SYSTEM REQUIREMENTS**

**NearPoint Platform Support**

- Microsoft Windows Server 2008 Standard and Enterprise Editions
- Microsoft Windows Server 2003 SP1, SP2—32 and 64-bit Standard and Enterprise Editions
- Microsoft Windows Server 2003 R2 SP1, SP2—32 and 64-bit Standard and Enterprise Edition

**Database Support**

- SQL Server 2008 Standard and Enterprise Editions
- SQL Server 2005 SP2 Standard and Enterprise Editions

**Language Support**

- English (US and UK), German, French

**WORM Storage Devices**

- EMC Centera with CenteraStar 3.0.3, 3.1.3 and 4.0
- Hitachi HCAP 2.4.197

**SharePoint**

- Microsoft Office SharePoint Server (MOSS) 2007
- Windows SharePoint Services (WSS) 3.0

**ABOUT MIMOSA SYSTEMS**

Mimosa Systems, Inc. delivers next-generation content archiving solutions for information immediacy, discovery, and continuity. Mimosa NearPoint is the industry's most comprehensive unstructured information management software solution for email, files, and instant messages, enabling archiving, eDiscovery, storage management, and recovery in a unified solution.

**MIMOSA SYSTEMS HEADQUARTERS**

3200 Coronado Drive  
 Santa Clara, CA 95054  
 T +1 (408) 970 9070  
 F +1 (408) 970 9041  
 Email: info@mimosasystems.com

**WORLDWIDE OFFICES**

Australia +61 (2) 9089 8603  
 Canada +1 (613) 797 2952  
 China +86 (21) 6103 7361  
 France +33 1 55 60 23 62  
 Germany +49 (89) 904 7551-0  
 India +91 (20) 4048596  
 United Kingdom +44 (0) 118 963 7860

www.mimosasystems.com

